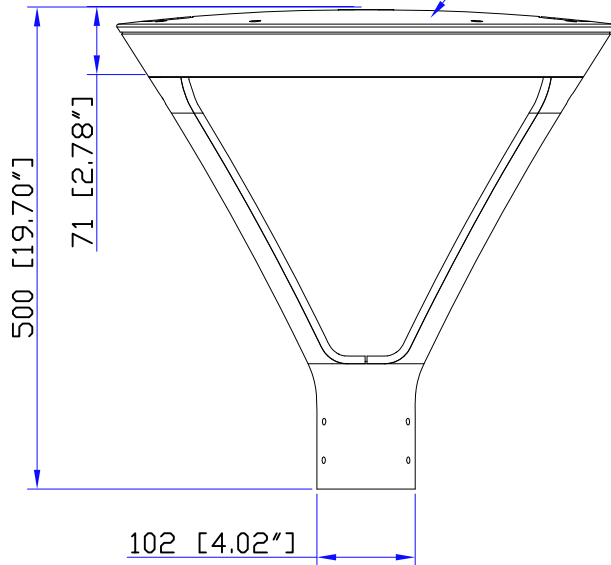
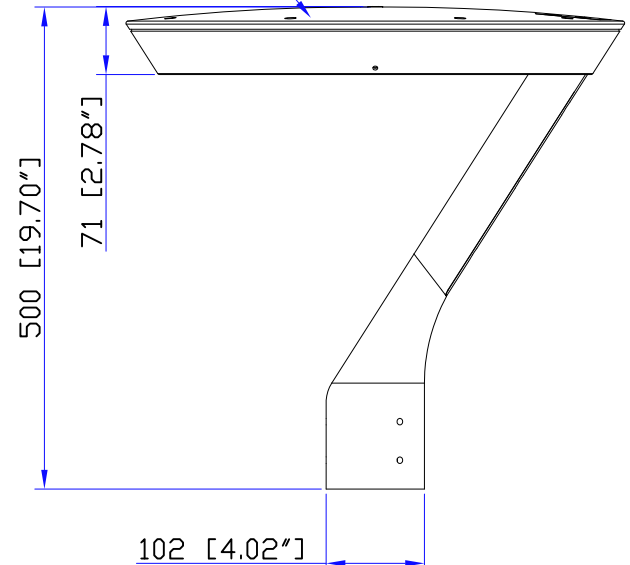


ALL ALUMINIUM
DIE-CAST HOUSING WITH
COLOR POWDER COATING



MACARON 2
DOUBLE ARM

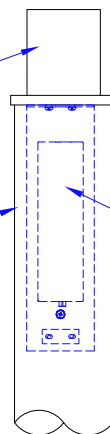


MACARON 1
SINGLE ARM

SPIGOT $\varnothing 76 \times 89 \text{ mm}$.
[$\varnothing 3.0 \times 3.5 \text{ inches}$]

LIGHT COLUMN

CONTROL GEAR SETUP
IN THE POLE TOP



LIGMAN
LIGHTING USA

7144 NE Progress Court, Hillsboro
Oregon, 97124, USA
Tel : 503 645 0500 | Fax : 503 645 8100

DESCRIPTION

MACARON 1 & 2 POST TOP
MODIFY TO BE 64 LED 148W WITH DISTRIBUTION TYPES

Designed by

Checked by

Approved by

Customer Approved

KIETISAK

*PUTTAWAN

Dwg. No.

US-1804

Date

21/02/18

Scale

1:8

Rev.

Q'ty

-

PROCESS

✓ N

MANUAL

✓ M

S